



STL
ALUMÍNIO

LINHA

RODO / VEDA PORTA

PERFIL EXTRUDADO DE ALUMÍNIO

CATÁLOGO Ver 1.0 | DEZ 24

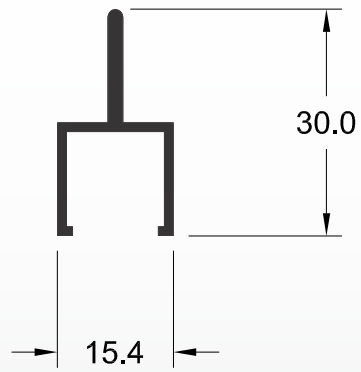
PERFIL	MERCADO	KG/M	PÁG.
STL-0050	—	0,064	07
STL-0051	—	0,124	08
STL-0079	—	0,230	03
STL-0155	—	0,225	03
STL-0325	—	0,275	03
STL-0665	—	0,127	04
STL-0739	—	0,103	07
STL-0740	—	0,132	08
STL-0948	—	0,154	08
STL-0949	—	0,073	07
STL-1734	—	0,235	04
STL-1795	—	0,098	07
STL-1796	—	0,168	08
STL-1829	—	0,168	04
STL-1830	—	0,146	04
STL-1852	—	0,137	05
STL-1871	—	0,643	05
STL-1881	—	0,240	06
STL-1899	—	0,200	05
STL-1900	—	0,174	09
STL-1929	—	0,365	06
STL-1930	—	0,361	06
STL-1966	—	0,177	05
STL-1733	—	0,262	09

STL-0155

Merc. -----

Peso 0,225 kg/m

Descr. -----

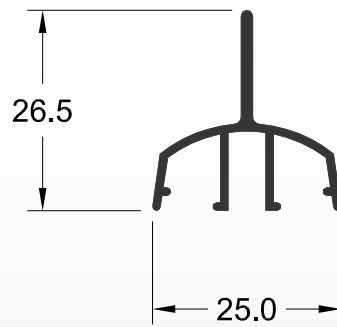


STL-0079

Merc. -----

Peso 0,230 kg/m

Descr. -----

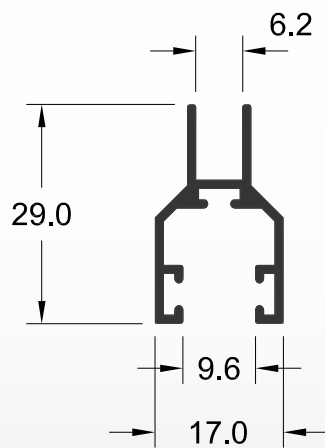


STL-0325

Merc. -----

Peso 0,275 kg/m

Descr. -----

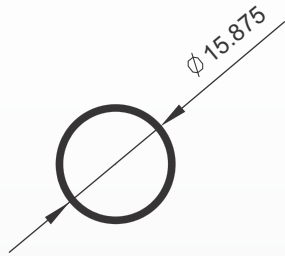


STL-0665

Merc. -----

Peso 0,127 kg/m

Descr. -----

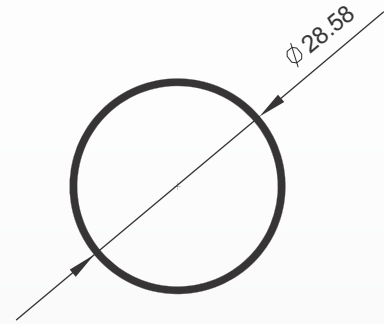


STL-1734

Merc. -----

Peso 0,235 kg/m

Descr. -----

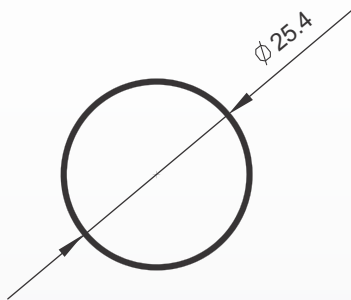


STL-1829

Merc. -----

Peso 0,168 kg/m

Descr. -----

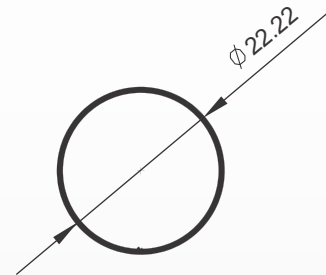


STL-1830

Merc. -----

Peso 0,146 kg/m

Descr. -----

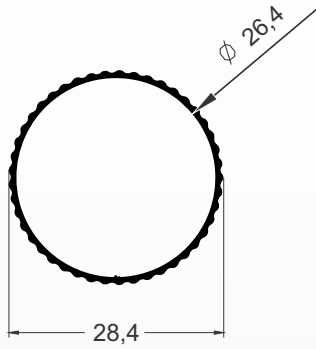


STL-1899

Merc. -----

Peso 0,200 kg/m

Descr. -----

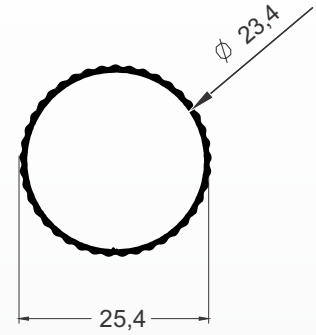


STL-1966

Merc. -----

Peso 0,177 kg/m

Descr. -----

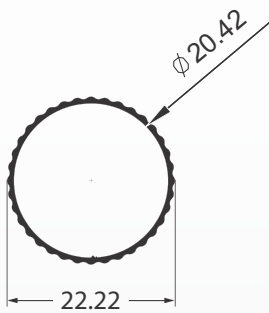


STL-1852

Merc. -----

Peso 0,137 kg/m

Descr. -----

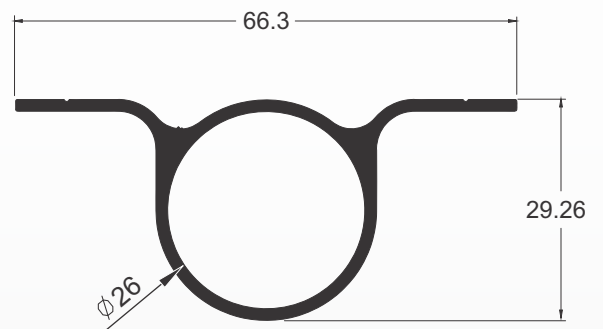


STL-1871

Merc. -----

Peso 0,643 kg/m

Descr. -----

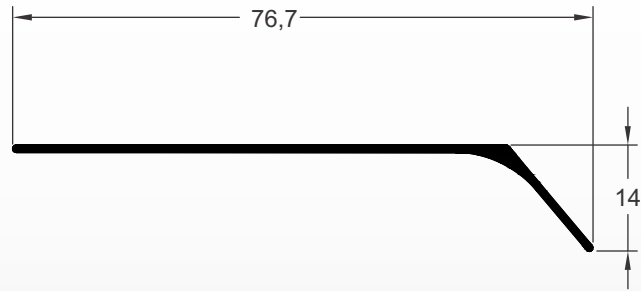


STL-1881

Merc. -----

Peso 0,240 kg/m

Descr. -----

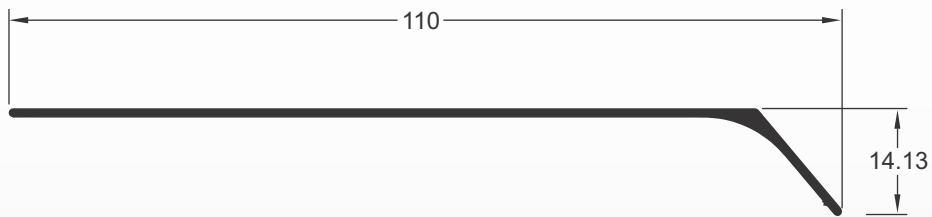


STL-1930

Merc. -----

Peso 0,361 kg/m

Descr. -----

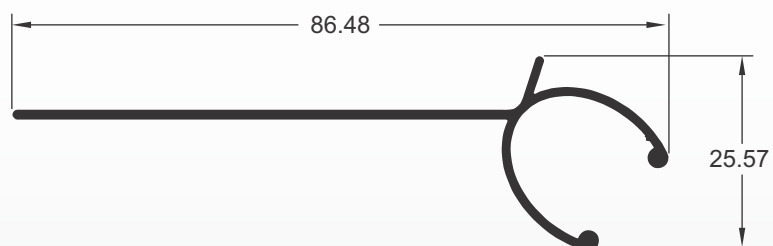


STL-1929

Merc. -----

Peso 0,365 kg/m

Descr. -----

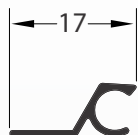


STL-0050

Merc. -----

Peso 0,064 kg/m

Descr. -----

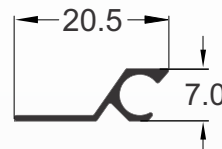


STL-0949

Merc. -----

Peso 0,073 kg/m

Descr. -----

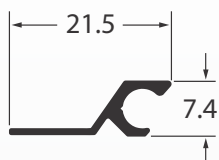


STL-1795

Merc. -----

Peso 0,098 kg/m

Descr. -----



STL-0739

Merc. -----

Peso 0,103 kg/m

Descr. -----

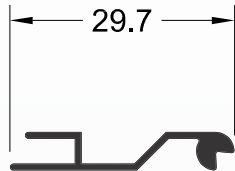


STL-0051

Merc. -----

Peso 0,124 kg/m

Descr. -----

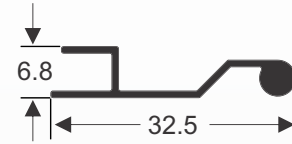


STL-0948

Merc. -----

Peso 0,154 kg/m

Descr. -----

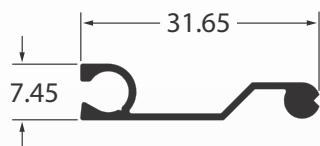


STL-1796

Merc. -----

Peso 0,168 kg/m

Descr. -----

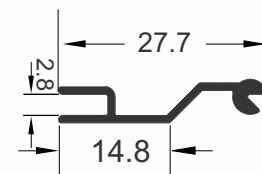


STL-0740

Merc. -----

Peso 0,132 kg/m

Descr. -----

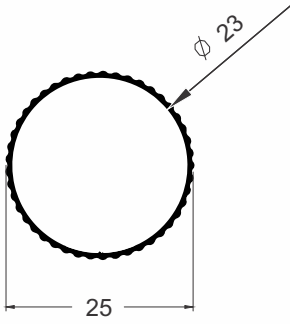


STL-1900

Merc. -----

Peso 0,174 kg/m

Descr. -----

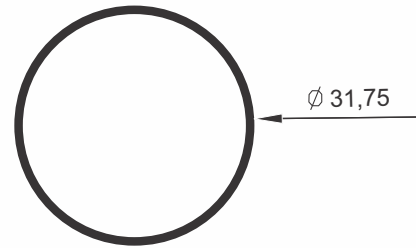


STL-1733

Merc. -----

Peso 0,262 kg/m

Descr. -----





STL
ALUMÍNIO



stlaluminio.com.br



Av. Industrial, 1500 - Distrito Industrial - CEP 08586-150
Itaquaquecetuba - SP - Tel.: 55+ 11 4233-9012